

# CITIZEN

Micro HumanTech

## Well protected High speed printing with unique ease of use



**CT-S651**  
(available in black or white)

### LED operation panel

The three colour LED indicates the printer's status, types of errors and messages.

### Toolfree maintenance

Paper jam? No problem for the CT-S651. One hand grip and the cutter is released automatically. No tool is needed. Even if the long-life cutter ever needs to be exchanged. Thanks to it's Snap-In design this only takes 30 seconds.

### Internal Power Supply

All 80mm POS printers from Citizen offer an internal power supply.

## CT-S651

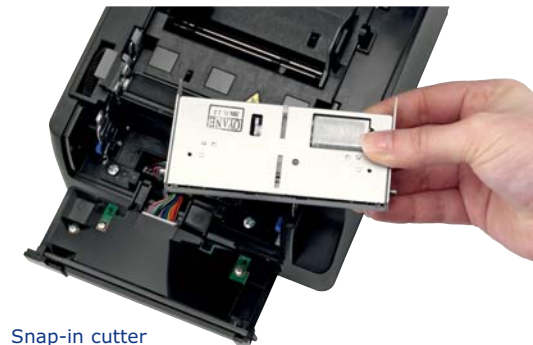
POS

### Applications

- Hospitality
- Receipt
- Coupon
- Ticket
- Daily Report
- Kitchen
- Delivery slip
- Barcode
- Weigh scales
- Kiosk
- Queue management



Operation panel



Snap-in cutter

# CITIZEN

Micro HumanTech

## Accessories

### Interface Connections

Serial IF1-RS01	USB incl. USB hub IF1-HU01
Parallel IF1-PA01	Ethernet (SEH) IF1-ES01
USB IF1-UB01	Ethernet (Standard) IF1-ET01
Powered USB IF1-PU01	

## Specifications

<b>Printing method</b>	Line thermal dot printing
<b>Printing width</b>	80mm/640 dots, 72mm/576 dots, 64mm/512 dots, 54.5mm/436 dots, 54mm/432 dots, 52.5mm/420 dots, 48mm/384 dots, 45mm/360 dots, 48.75mm/390 dots, 68.25mm/546 dots
<b>Dot pitch</b>	8 x 8 dots/mm (203 dpi)
<b>Printing speed</b>	Max. 200mm/s (print density 100%), 1600 dot-lines/s
<b>Number of columns</b>	83mm paper: Font A - 53, Font B - 71, Font C - 80, 80mm paper: Font A - 48, Font B - 64, Font C - 72, 60mm paper: Font A - 36, Font B - 48, Font C - 54, 58mm paper: Font A - 35, Font B - 46, Font C - 52
<b>Character size (WxH)</b>	Font A: 1.50 x 3.00mm (12 x 24 dots), Font B: 1.13 x 2.13mm (9 x 17 dots), Font C: 1.00 x 2.00mm (8 x 16 dots)
<b>Character table</b>	Alphanumeric, international, PC437/850/852/857/858/860/863/864/865/866/WPC1252/katakana/Thai code 18
<b>Barcode type</b>	UPC-A/E, JAN-13/8, Code 39, Code 128, CODABAR, Code 93, PDF417, QR Code
<b>Logo registration/print</b>	384 KB (capable of storing user-defined characters and logos)
<b>Line spacing</b>	4.23mm (1/6 inch), can be set by command
<b>Paper</b>	<b>Width</b> 83mm/80mm/60mm/58mm (all +0/-1mm) <b>Diameter</b> maximum 83mm <b>Thickness</b> 65-75µm (core tube diameter: inner 12mm/outer 18mm) 75-150µm (core tube diameter: inner 25.4mm/outer 32mm) <b>Recommended Paper</b> TF-50KS-E-2D from Nippon Paper, PD150R or PD160R from Ohji Paper, PA220AG, HP220A, HP220AB-1, F230AA, P220AB, or PB670 (2-color paper) from Mitsubishi Paper
<b>Interface</b>	Serial (RS-232C compliant), parallel (IEEE 1284 compliant), USB, USB with hub, Ethernet, powered USB
<b>Input buffer</b>	4K bytes/45 bytes
<b>Drawer kick-out</b>	2 drawers
<b>Operation panel</b>	3 LED's, Feed button
<b>Power supply</b>	Input: AC 100 to 240V, 50/60 Hz, 150 VA, Output: DC 24, 2.1 A
<b>Weight</b>	CT-S651S: Approx. 2 kg, CT-S651A: Approx. 1.6 kg
<b>Dimensions (W x D x H)</b>	CT-S651S: 145 x 192 x 148 mm, CT-S651A: 145 (W) x 192 (D) x 120 (H) mm
<b>Operating environment</b>	5 to 45°C, 10 to 90% RH (no condensation)
<b>Storage environment</b>	-20 to 60°C, 10 to 90% RH (no condensation)
<b>Reliability</b>	Print head life: 150km, 200 million pulses (at normal temperature and humidity using recommended paper), Auto cutter life: 2 million cuts (at normal temperature/humidity, using recommended paper and paper thickness)
<b>EMC and safety standards</b>	UL, C-UL, FCC Class A, TUV-Bauart, CE Marking

### Type Classification

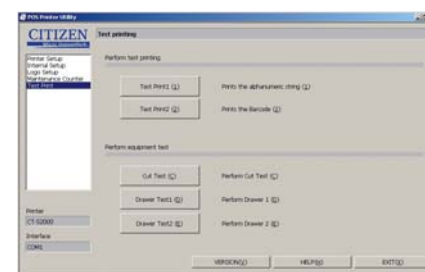
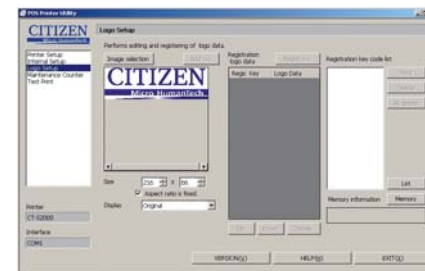
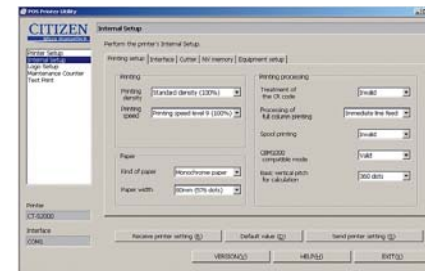
CT-S651S 3 RS E BK P  
1) 2) 3) 4) 5) 6) 7)

- |  |  |   |   |   |
|--|--|---|---|---|
| <b>1) Model type</b><br>CT-S651  | <b>2) Power supply</b><br>DC: No power source<br>S: Built-in power supply type<br>A: AC adapter type | <b>3) Paper width</b><br>3: 3 inch (80/83 mm)<br>2: 2 inch (58/60 mm) | <b>4) Interface</b><br>PA: Parallel<br>RS: Serial RS-232C<br>UB: USB only<br>UH: USB with hub | ET: Ethernet (standard type)<br>ES: Ethernet (multi-function type)<br>UP: Powered USB |
| <b>5) Market:</b><br>J: Japanese<br>E: Europe/Asia<br>U: North America<br>C: China | <b>6) Body case color</b><br>WH: White<br>BK: Black<br>GR: Gray                                      | <b>7) PNE sensor</b><br>No<br>P: PNE sensor                           |   |   |



Exchangeable interfaces

### Customization Software



## Features



- 200mm / sec high-speed printing
- 82,5/80/60/58 mm selectable paper width
- Easy paper loading
- Auto retracting Cutter (full/partial)
- Snap-in cutter
- Operation panel with 3 LED's and feed button
- Built-in buzzer
- Front paper exit
- Paper roll capacity Ø 83mm
- Exchangeable interface cards
- Built-in AC adaptor
- Cash drawer kick-out
- Bitmap registration (NV memory)
- Barcode printing
- ESC/POS compatibility
- Page mode
- Two color printing
- Smoothing fonts
- Available in white, black or dark grey (option)
- Driver: Win2000/XP/Vista/2003 Server, OPOS, Java POS, CUPS
- Utility software: Printer customization software, Receipt Layout Designer